

# End Suction Pumps

## Crane Pumps & Systems



**Jon Palmer**  
Application Engineer  
Crane Pumps & Systems

**CRANE**<sup>®</sup>

PUMPS & SYSTEMS

- **Features by Brand**
- 375 / 575 Review
- Value Proposition
- Competition
- Kit Program
- Price & Availability

## Four Brands

## Which Brand Should I Use?

**BARNES**<sup>®</sup>**DEMING**<sup>®</sup>**burks**<sup>®</sup>**WEINMAN**<sup>®</sup>

## Four Brands

## Which Brand Should I Use?

- **Barnes**
- Burks
- Deming
- Weinman

## Barnes End Suction Pumps



# Overview End Suction Pumps

*Everyone. Everywhere. On Time Every Time.*

Barnes brand is dependable, high efficiency, pump providing quick delivery to the Marine Industry.

# Overview End Suction Pumps

*Everyone. Everywhere. On Time Every Time.*

## Barnes End Suction Product Offering

- This general purpose all iron pump configured in frame-mounted arrangement
- Applications
  - General water circulation
  - Fire fighting
  - Wash-down



**Models:** HCU Series  
**Flows To:** 600 g.p.m.  
**Heads To:** 360 feet  
**Discharge:** 2 or 4 inches  
**HP:** 0.33-60  
**RPM:** 1750 or 3450

## Which Brand Should I Use?

- Barnes
- **Burks**
- Deming
- Weinman



## Burks End Suction Pumps



# Overview End Suction Pumps

*Everyone. Everywhere. On Time Every Time.*

Burks brand is dependable, high reliability, pump with a broad range of miscellaneous services at lower capacities.

# Overview End Suction Pumps

*Everyone. Everywhere. On Time Every Time.*

## Burks End Suction Product Offering

- This general purpose all iron pump is typically used as an OEM pump. Started in Water Systems
- The products include the centrifugal end suction and the regen turbine.
  - Jacketed Seal – Handle fluids up to 500°F
- Applications
  - High Temp Fluids
  - Coolants
  - Building Service
  - Washer Lines
  - Irrigation

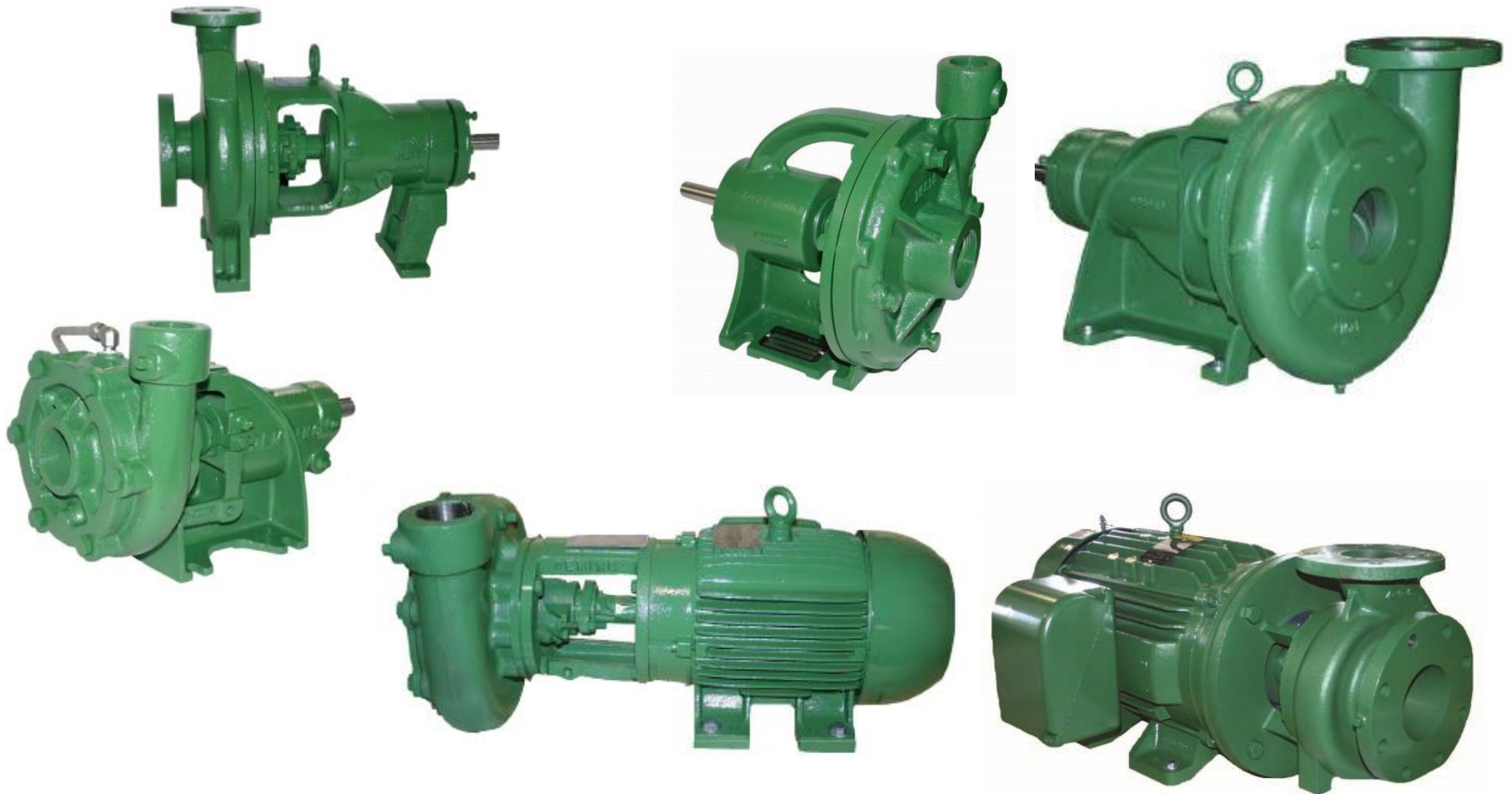


**Models:** GNA, GNB, GNC, G, GA, DF  
**Flows To:** 1,100 g.p.m.  
**Heads To:** 380 feet  
**Discharge:** 3/4 inch to 4 inches  
**HP:** 0.33- 75  
**RPM:** 1750 or 3450

## Which Brand Should I Use?

- Barnes
- Burks
- **Deming**
- Weinman

## Deming End Suction Pumps



# Overview End Suction Pumps

*Everyone. Everywhere. On Time Every Time.*

Deming brand is rugged construction, dependable, competitively priced, with competitive deliveries for a board range of industrial water supply services.

## Deming End Suction Product Offering

- This general purpose pump can be configured in frame-mounted and close-coupled, semi-open and enclosed impeller configurations, packing, double seals, and gland options. They are available in 44 sizes to meet your design requirements.
- Material Options
  - 316 Stainless
  - Bronze (#5 Zinc free & #8 Naval)
- Applications
  - Industrial Service
  - Booster Service
  - Chemical Service
  - General Water Supply
  - Coolants
  - Washer Lines



**Models:** 3000 and 4000 Series  
**Flows to:** 4,000 g.p.m.  
**Heads to:** 780 feet  
**Discharge:** 1-6 inches  
**HP:** .33-60  
**RPM:** 1750 or 3450  
**HZ:** 50 HZ Models Available

## ■ Impeller Types

### – Semi-Open – 4000 Series

- Uses the open design and adds a complete shroud, usually at the back. The shroud normally has pump-out vanes on the back to reduce the pressure and to prevent foreign matter from lodging in back of the impeller. The incorporation of a sealing ring and balance holes reduces the pressure at the stuffing box for longer wear. This impeller is used for fluids with larger particles. It is a very forgiving design and adjustment can be renewed with the suction cover.

### – Enclosed – 3000 Series

- Is the most common design used in overhung load centrifugal pumps. The impeller is designed for clean fluids and incorporates a front shroud with a suction made to direct fluid into the impeller eye. This running joint is usually a short cylindrical surface on the front shroud and rotates within a larger stationary cylindrical surface in the suction of the casings. Wearing rings can be added to both of these surfaces to allow for future repair due to wear. This impeller design is normally 3 points higher in efficiency than the semi-open impeller.

ENCLOSED



SEMI-OPEN





## Which Brand Should I Use?

- Barnes
- Burks
- Deming
- **Weinman**

# Overview End Suction Pumps

*Everyone. Everywhere. On Time Every Time.*

Weinman brand is rugged construction, dependable, competitively priced, with competitive deliveries for a board range of water supply services.

*Everyone. Everywhere. On Time Every Time.*

# Weinman End Suction Pumps



## Weinman End Suction Product Offering

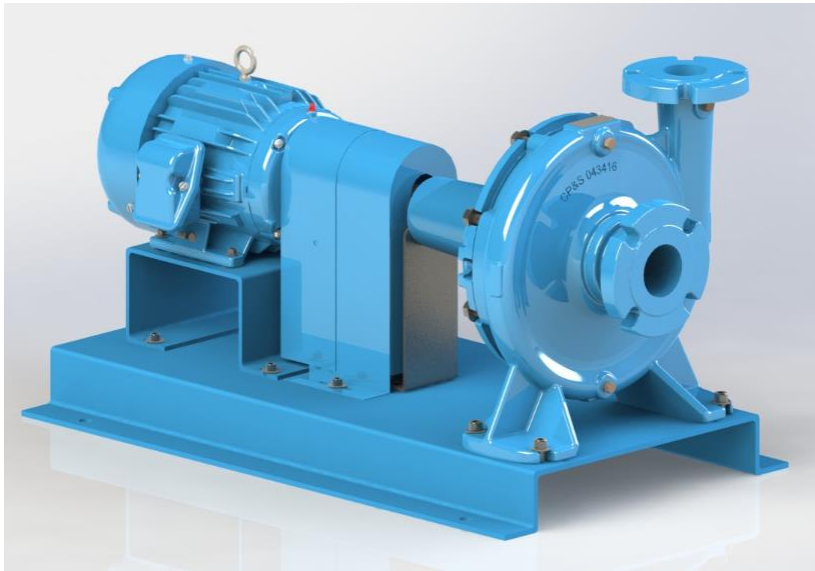
- This general purpose pump can be configured in frame-mounted and close-coupled.
- Quick Delivery
- NSF 372 Certified (NSF 61 optional)
- High Pressure – Up to 400#
- Applications
  - Booster Service
  - General Water Supply
  - Cooling Towers
  - Condensate Systems
  - Building Service
  - Washer Lines
  - Irrigation



**Models:** A, B, G and K Series, 375 and 575 Back Pull Out Series  
**Flows To:** 4,000 g.p.m.  
**Heads To:** 425 feet  
**Discharge:** 1-10 inches  
**HP:** 0.33- 200  
**RPM:** 1150, 1750, or 3450

- Features by Brand
- **375 / 575 Review**
- Value Proposition
- Competition
- Kit Program
- Price & Availability

## Weinman 375/575 Back Pull Out End Suction Pumps



Series 575 - Frame Mounted

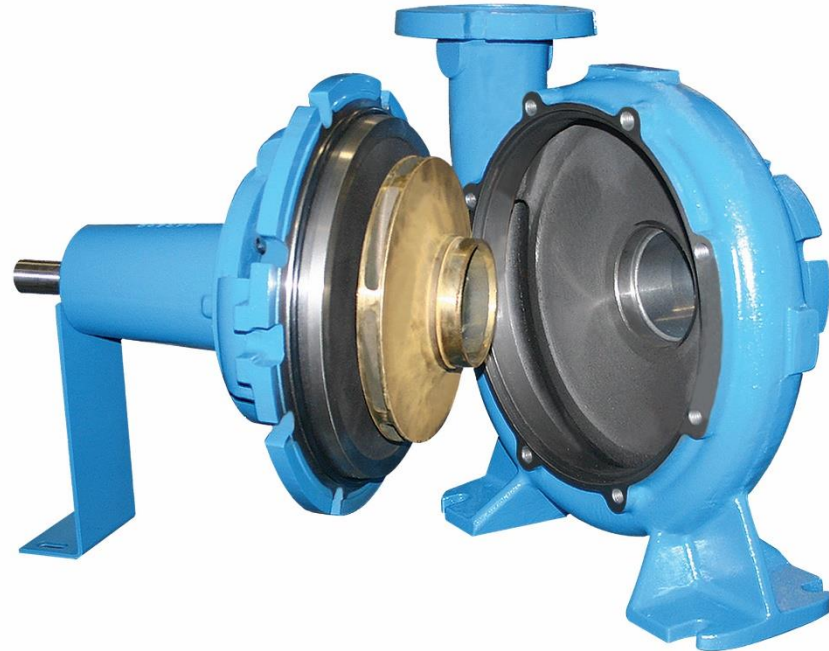


Series 375 - Close Coupled

# Weinman 375/575 End Suction

*Everyone. Everywhere. On Time Every Time.*

## What is the Weinman 375/575?



# 575 Back Pull Out End Suction

*Everyone. Everywhere. On Time Every Time.*

## Clean Water - Solution

The 375/575 Weinman Back Pull Out

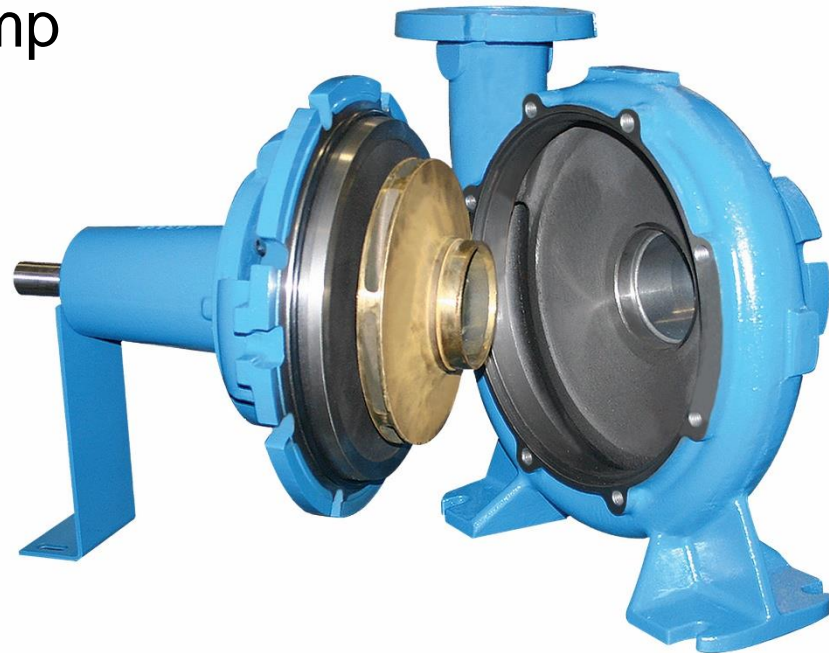
A Premium End Suction Pump

Back Pull Out Design

Full Range of Sizes

High Efficiencies

NSF 372 Certified



**The New Back Pull Out End Suction will minimize operating, capital, and maintenance costs, while increasing reliability and uptime.**



## Weinman 375/575 :

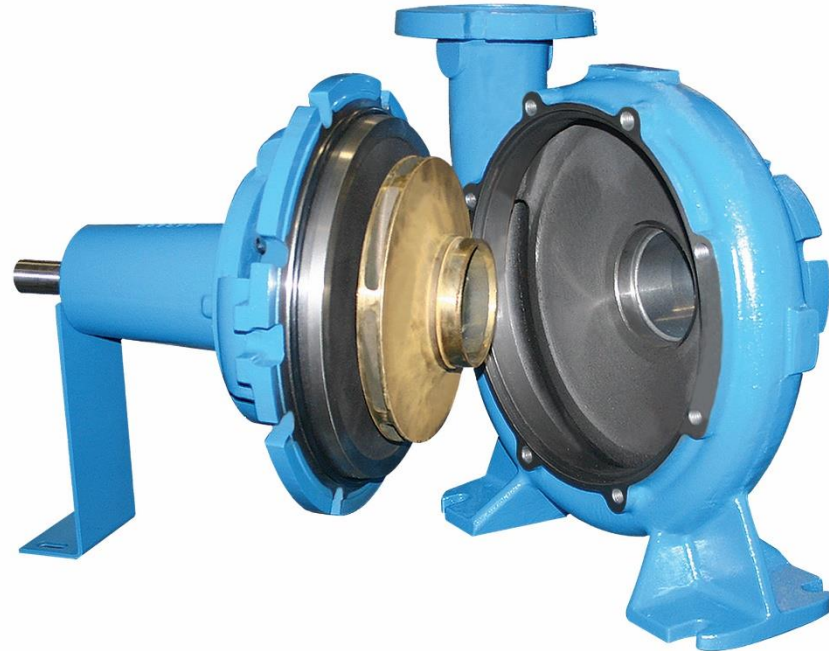
- P Series 7" Impeller
- Q Series 9.5" Impeller
- R Series 13" Impeller
- S Series 15.5" Impeller

## Available Sizes

Cross Reference Table					
Weinman		Bell & Gossett			
575 Model	500 Series	1510 Series	Discharge	Suction	Impeller
1P	1G	None	1	1.25	7
1.5P	1.5G	1.5 AC	1.5	2	7
2P	2G	2AC	2	2.5	7
2.5P	2.5G	2.5AB	2.5	3	7
3P	3G	3AC	3	4	7
4P	4GL	4AC	4	5	7
1.5Q	1.5K1	None	1.5	2	9.5
2Q	2K	None	2	2.5	9.5
2.5Q	2.5K	2.5BB	2.5	3	9.5
3Q	3K	3BC	3	4	9.5
4Q	4KL	4BC	4	5	9.5
5Q	5G	5BC	5	6	9.5
6Q	6G	6BC	6	8	9.5
1.5R	1.5KH	None	1.5	2	12
2.5R	2.5KH	None	2.5	3	12
3R	3KH1	3G	3	4	12
4R	4KS	4GB	4	5	13
5R	None	5G	5	6	13
6R	6K	6G	6	8	13
8R	None	8G	8	10	13
5S	None	None	5	6	15.5
6S	None	None	6	8	15.5



## Why the Back Pull Out?



# Weinman 375/575 End Suction

*Everyone. Everywhere. On Time Every Time.*

## Weinman 375/575 provides:

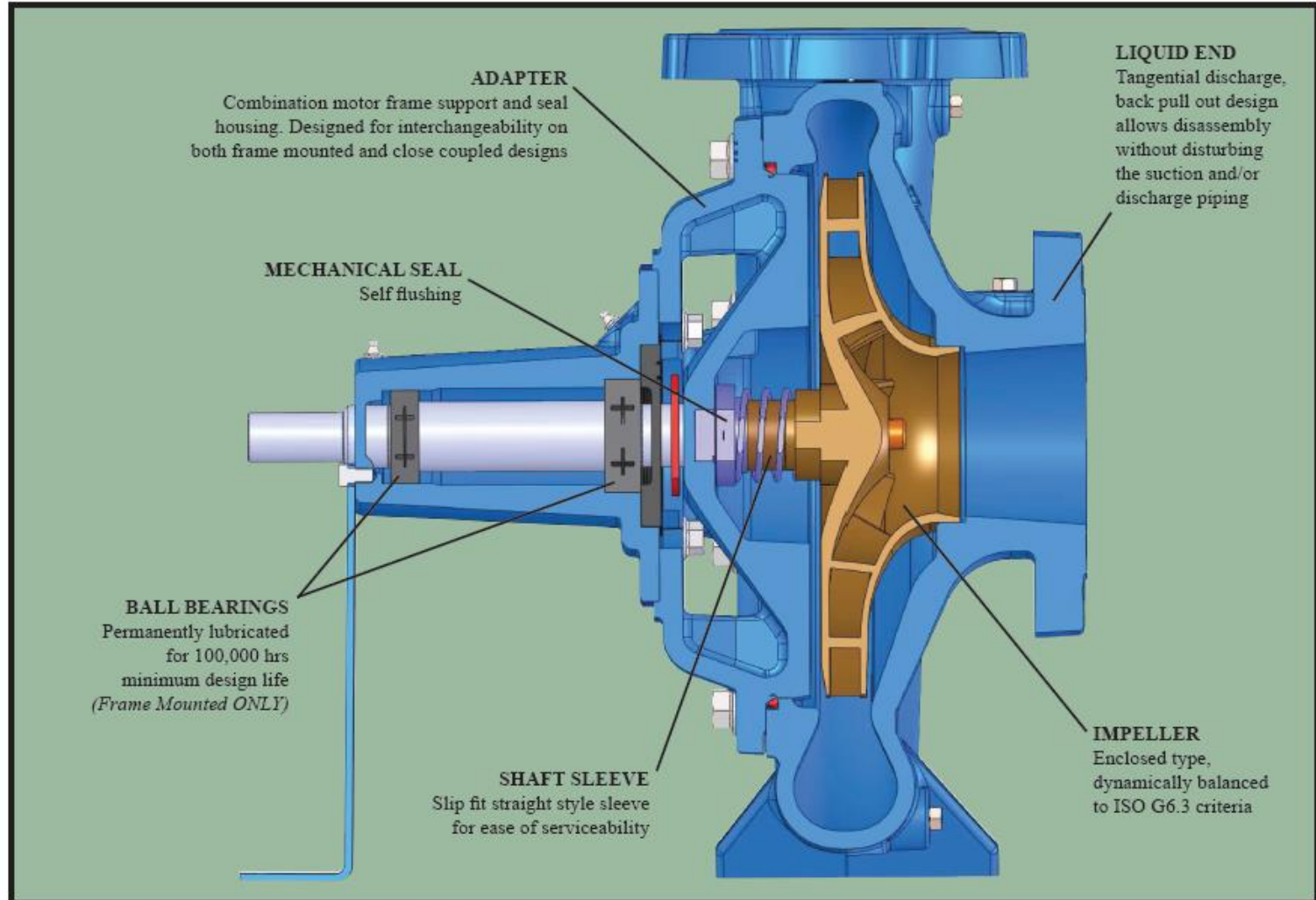
- Quick Delivery
- Back pull out design
- 22 models
- Tangential Discharge
- Industry leading efficiencies
- Self flushing mechanical seals
- Self-venting design
- Cast iron feet
- NSF 372 Low Lead
- NSF 61- Option
- Two Models with 15” Impeller
- Zinc free impeller - Option



# Weinman 375/575 End Suction

*Everyone. Everywhere. On Time Every Time.*

## Features and Benefits:



# Value Proposition

# 375/575 Back Pull Out End Suction Value Proposition

*Everyone. Everywhere. On Time Every Time.*

## Value Proposition

### Commercial Building –

**Efficiency, pricing, NSF, and direct B&G replacement.**

For HVAC systems and service providers, Weinman's new 375/575 end suction pump with its tangential discharge and back pull out design, offers a direct flange to flange match with the majority of the installed base that eliminates the need to disturb existing piping. The new design comes standard with NSF 372 low lead certification with the option of NSF 61, and an integral self-flushing and self-venting feature that simplifies start-up. The steep performance curve, wider efficiency band and lower run out horsepower minimizes operating costs making it one of the best available for variable speed control. The 375/575 is priced less than the competition making it an overall value for bid spec projects.



# 375/575 Back Pull Out End Suction Value Proposition

*Everyone. Everywhere. On Time Every Time.*

## Value Proposition

### Industrial –

### Durability and Delivery

For Industrial Distributors whose customers cannot afford downtime, Weinman's new 375/575 end suction pump is a direct flange to flange match with the majority of the competitors frame mounted install base and a two week lead time. The new design has options for stainless steel shafts and regreasable bearings for industrial applications. Add to that its tangential discharge and integrally molded feet makes it a true back pull out design regardless of whether it's frame mounted or close coupled. The steep performance curve, wider efficiency band and lower run out horsepower minimizes operating costs making it one of the best available for industrial clean water applications.



# 375/575 Back Pull Out End Suction Value Proposition

*Everyone. Everywhere. On Time Every Time.*

## Value Proposition

### Municipal

#### Delivery and NSF Certification 372 and 61

For Municipal Distributors, Weinman's new 375/575 end suction pump is a direct flange to flange match with the majority of the competitors frame mounted install base and a two week lead time. The new design comes standard with NSF 372 low lead certification with the option of NSF 61, the drinking water standard. Add to that its tangential discharge and integrally molded feet makes it a true back pull out design regardless of whether it's frame mounted or close coupled.





- Overview
- Value Proposition
- Competition
- Kit Program
- Price & Availability

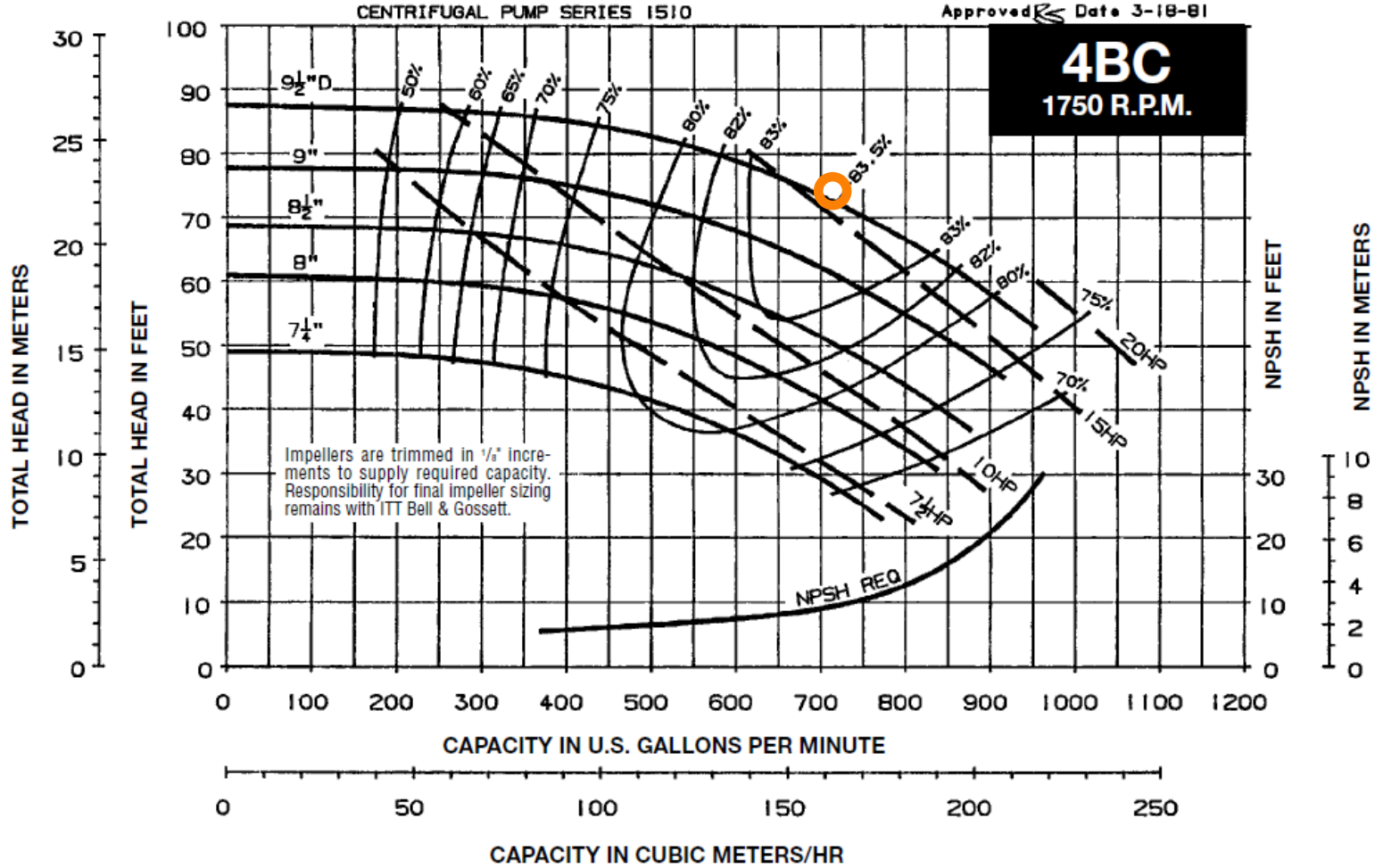
# Competition

## Major Competitors

- Bell & Gossett
  - Market Leader HVAC End Suction
  - Large Install Base
  - Tangential Discharge
  
- Taco
  - Close second in the Marketplace
  - Large Install Base
  - Centerline Discharge
  
- Armstrong
  - Distant third place
  - Centerline Discharge

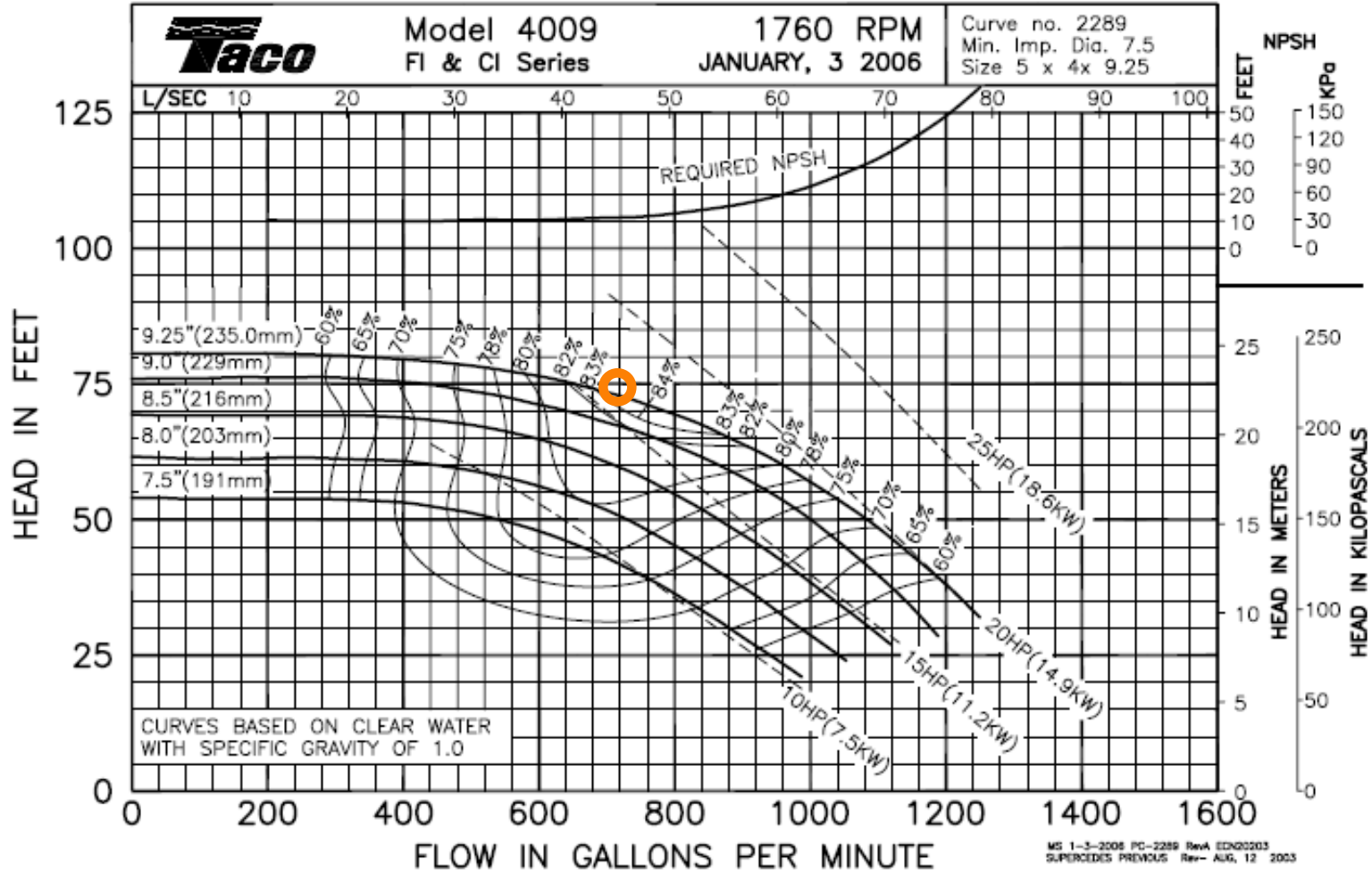


Everyone. Everywhere. On Time Every Time.



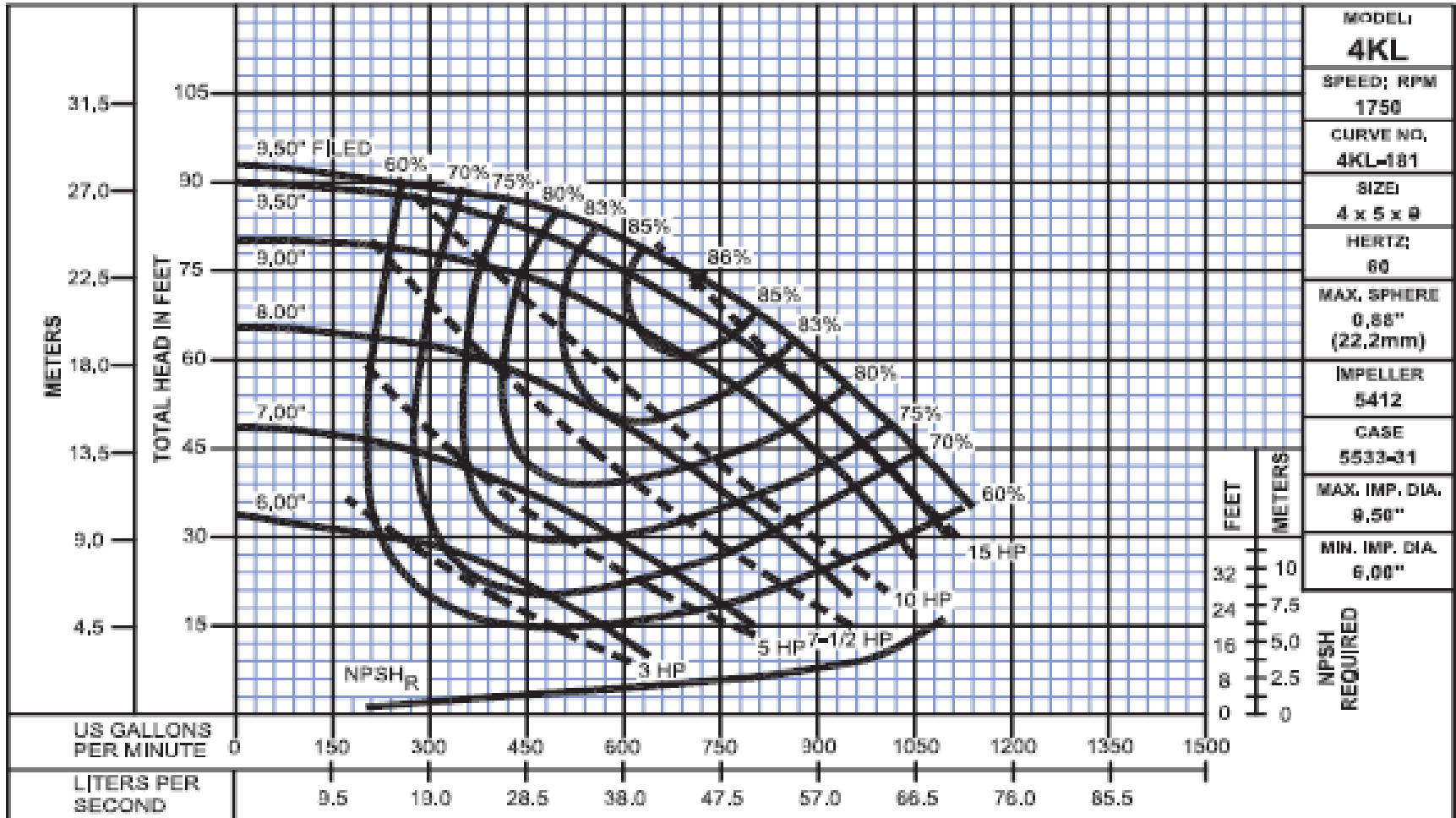
- BEP = 83.5%
  - Flow @ BEP = 720gpm
- Width @ 80% = 370gpm
  - Score =  $370 / (2 * 720) = 0.257$

Everyone. Everywhere. On Time Every Time.



- BEP = 84%
- Flow @ BEP = 760gpm
- Width @ 80% = 380gpm
- Score =  $380 / (2 * 760) = 0.250$

*Everyone. Everywhere. On Time Every Time.*



- BEP = 86%
- Flow @ BEP = 720gpm
- Width @ 80% = 450gpm
- Score =  $450 / (2 * 720) = 0.313$

# 4 x 5 x 9 Comparison

*Everyone. Everywhere. On Time Every Time.*

- Weinman 4KL = 0.313
- Taco 4009 = 0.250
- B&G 4BC = 0.257
  
- Weinman has the highest score and will provide the most energy efficient selection in a wider variety of systems than any other pump of similar size
- B&G and Taco pumps are within 75% of the Weinman score and should be seen as acceptable pumps for this size

## Bell & Gossett



Paper gasket easily rips and is no longer usable beyond this point.

The Weinman pump uses an o-ring than does not break easily.

## TACO



## Armstrong





## 16 Case Bolts



This pump uses 16 case bolts compared to the 8 case bolts for the Weinman pumps.

This will take twice as long to bolt up the adapter to the case.

## Securing the Coupling Guard



Tightening the bolts can be tricky due to the positioning of the bolts.

Additionally, the middle bolt requires threading the bolt through 5 holes to get to the other side.

## Big Socket Set Needed



Four different sockets were needed in order to disassemble the pump.



## Cannot Use a Socket



An open end wrench is needed to remove the bolts on the cap which adds to the time for assembly and teardown.



# Kit Program

## What is the Kit Program

Carry few components but cover many applications

Set of 6 Subcomponents

- Bearing Frame Kit
  - Bearing Frame, mounting screws
- Impeller Kit
  - Impeller, support bracket
- Adapter Kit
  - Adapter, seal, shaft sleeve
- Case Kit
  - Case, plugs, nameplate
- Base Kit
  - Pre-drilled bases, couplings, guards
- Motors
  - Full range of T frame and JM Frame. receive a 0.4 multiplier.

# Weinman 375/575 End Suction Kit Program

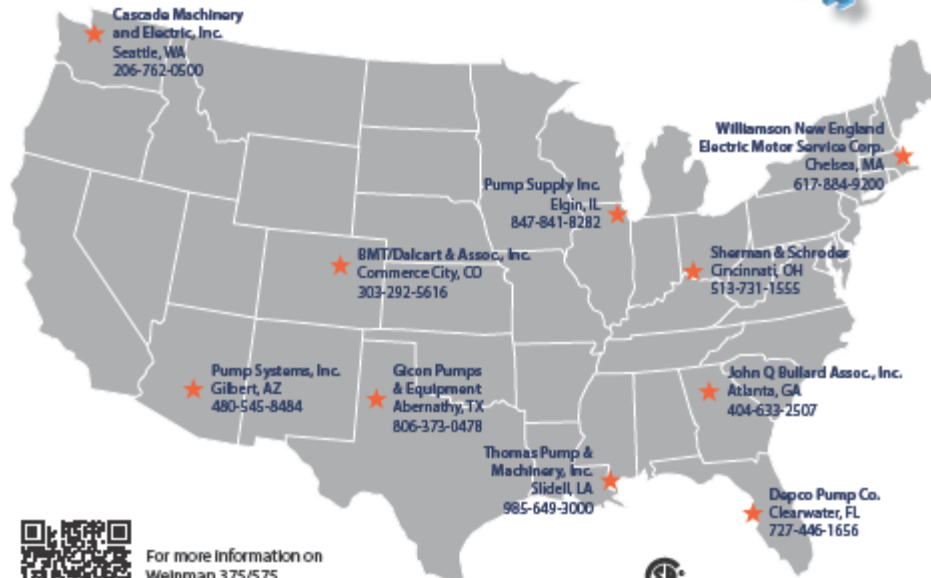
*Everyone. Everywhere. On Time Every Time.*

## Need an end suction in a hurry?

Call one of our Weinman 375/575 kit stocking distributors

### Weinman 375/575 End Suction Pump Series

- Close coupled or frame mounted
- NSF 61 Approved
- Retrofit to largest installed base
- Back pull out design with wide efficiency bulls-eye
- Made in the USA



For more information on Weinman 375/575 end suction pumps visit [www.cranepumps.com](http://www.cranepumps.com)



## National Kit Program

- Network of Stocking Distributors
- Regional access
- Covers a wide range of application
- Advertise on our website
- Highlight in trade magazines

# Weinman 375/575 End Suction Kit Program

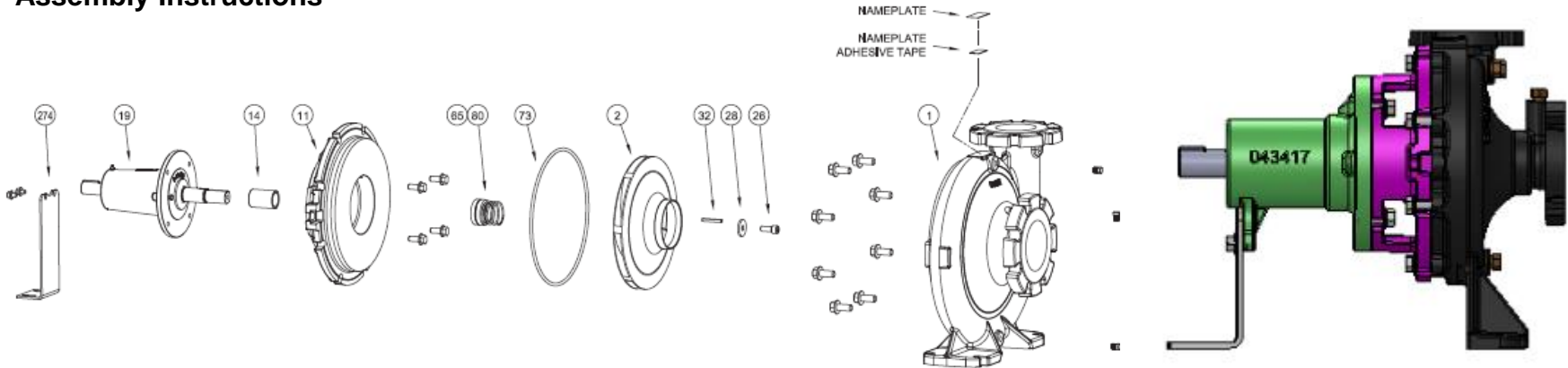
*Everyone. Everywhere. On Time Every Time.*

## Kits

### Recommended Initial Stocking Kit

Model	Frame Size	Discharge	Suction	Impeller	Impeller Kit			Case Kit			Adapter Kit				Bearing Frame Kit					
					Qty	Part #	List	Qty	Part #	List	Models	Qty	Part #	Description Based on Motor	List	Qty	Part #	Description Based on Motor	List	
1P	Small	1	1.25	7	2	135673	\$ 235	2	135644	\$ 315	P	4	135661	KIT,ADAPTER,P,140/180/S	\$ 126	15	135648	KIT,FRAME,BEARING,S	\$ 293	
1.5P	Small	1.5	2	7	2	136065	\$ 285	2	136058	\$ 183		4	135662	KIT,ADAPTER,P,210	\$ 295	25	135647	KIT,FRAME,BEARING,M	\$ 353	
2P	Small	2	3	7	2	136064	\$ 297	4	136057	\$ 200		4	135663	KIT,ADAPTER,P,250/M	\$ 363	0	136297	KIT,FRAME,BEARING,L	\$ 865	
	Medium	2	3	7	2	136063	\$ 297													
2.5P	Small	3	4	7	0	135674	\$ 300	0	135645	\$ 215										
	Medium	3	4	7	0	135686	\$ 403													
3P	Small	3	4	7	2	135675	\$ 595	4	135646	\$ 268										
	Medium	3	4	7	2	135687	\$ 596													
4P	Small	4	5	7	2	136067	\$ 362	4	136059	\$ 300										
	Medium	4	5	7	2	136066	\$ 362													

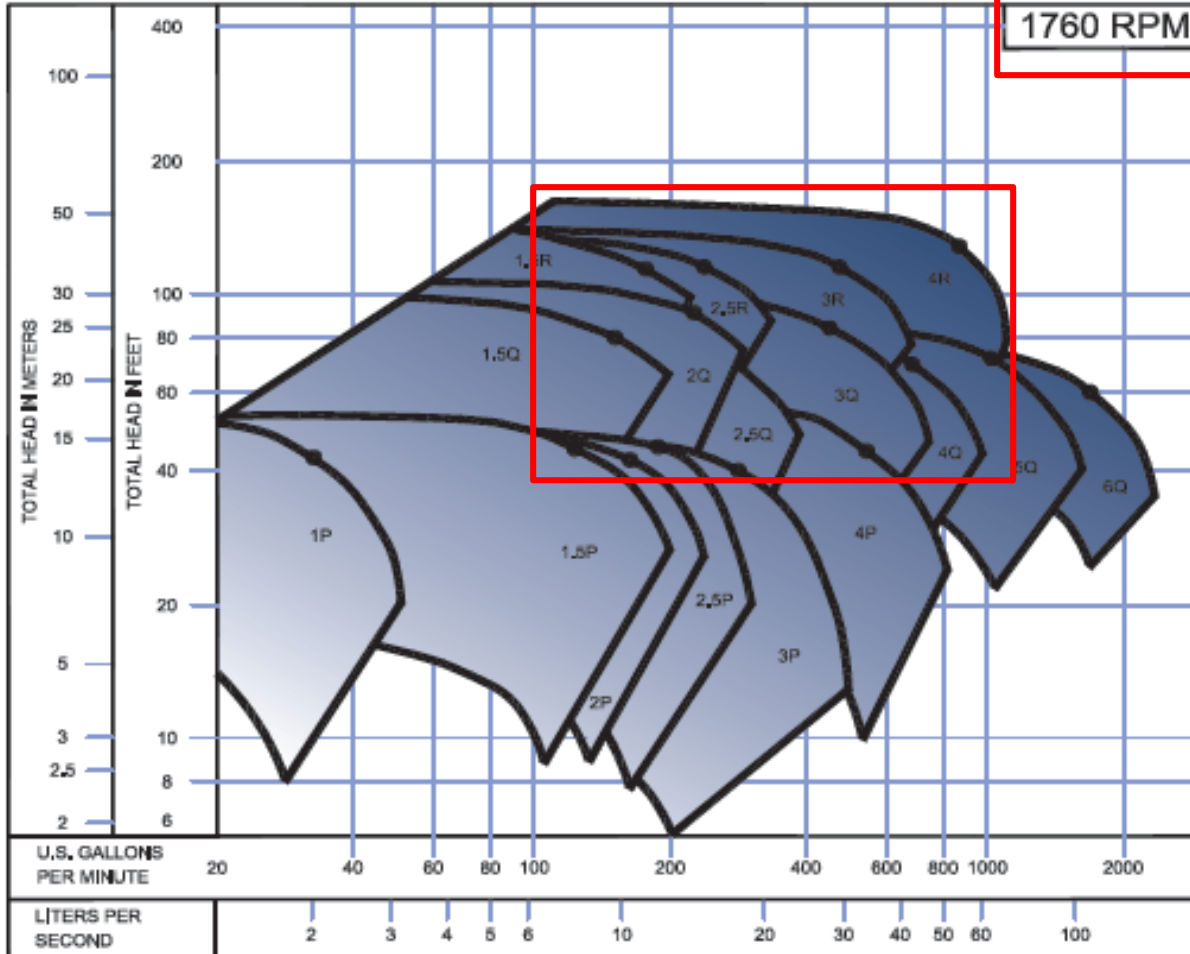
### Assembly Instructions





## Kits

Maximum coverage with minimum inventory required



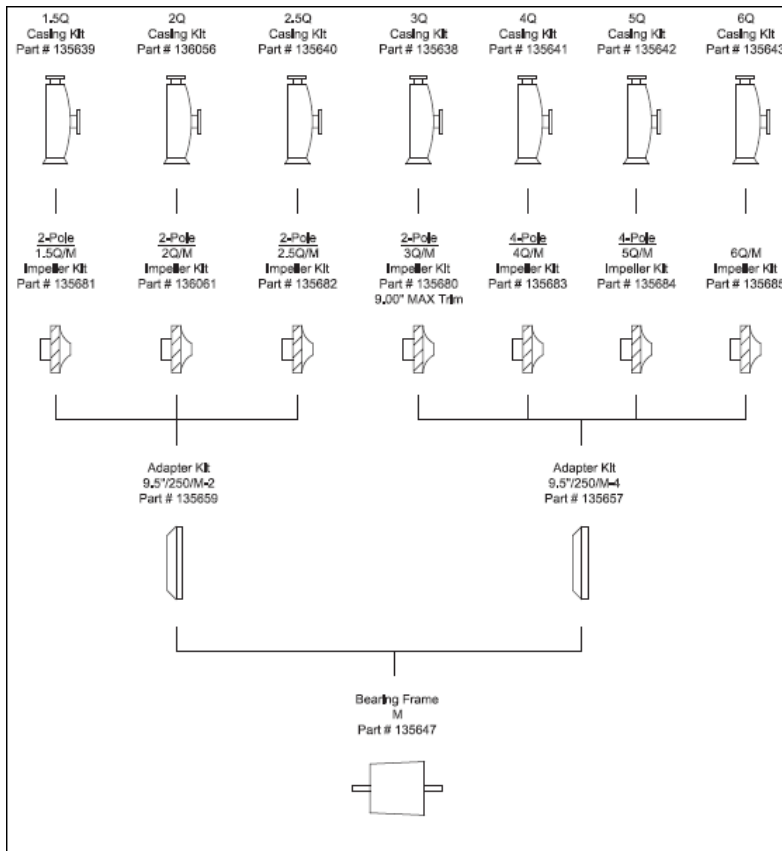
- Just by keeping the Q Series which has a 9.5" impeller, you can satisfy a broad range of applications from 100 – 2000 gpm.
- If you add a couple of the larger impeller models, R Series and you head capabilities doubles.
- The recommended stock list covers the flow range of 100 – 1000 gpm

# Weinman 375/575 End Suction Kit Program

*Everyone. Everywhere. On Time Every Time.*





## Kits

### Interchangeability Chart



**Multiple options with a few components**

### Kit Component Chart

<p><b>CASING KIT</b></p> 	<p><b>CASING KIT INCLUDES:</b></p> <ul style="list-style-type: none"> <li>- CASE</li> <li>- PLUGS</li> <li>- NAMEPLATE - SS</li> <li>- ADHESIVE TAPE</li> <li>- WASHERS</li> </ul>
<p><b>IMPELLER KIT</b></p> 	<p><b>IMPELLER KIT INCLUDES:</b></p> <ul style="list-style-type: none"> <li>- IMPELLER - LOW LEAD BRONZE</li> <li>- SUPPORT BRACKET (BEARING FRAME)</li> </ul>
<p><b>ADAPTER KIT</b></p> 	<p><b>ADAPTER KIT INCLUDES:</b></p> <ul style="list-style-type: none"> <li>- ADAPTER - CAST IRON</li> <li>- SEAL - CARBON/CERAMIC/BUNA/SS</li> <li>- SHAFT SLEEVE</li> <li>- SCREWS (ADAPTER TO FRAME)</li> <li>- SCREWS (ADAPTER TO CASING)</li> <li>- IMPELLER SCREW WASHER - SS</li> <li>- O-RING (CASE GASKET)</li> <li>- IMPELLER SCREW - SS</li> <li>- IMPELLER KEY - SS</li> </ul>
<p><b>BEARING FRAME</b></p> 	<p><b>BEARING FRAME KIT INCLUDES:</b></p> <ul style="list-style-type: none"> <li>- BEARING FRAME (ASSEMBLED COMPLETE)</li> <li>- SCREWS (MOUNT TO SUPPORT BRACKET)</li> </ul>

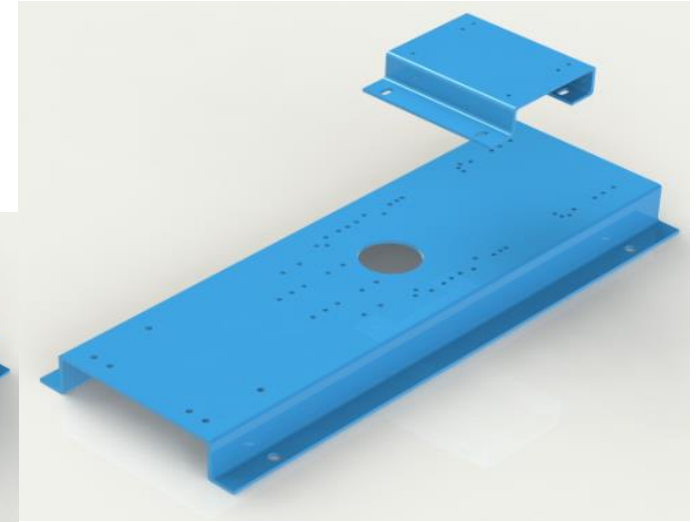
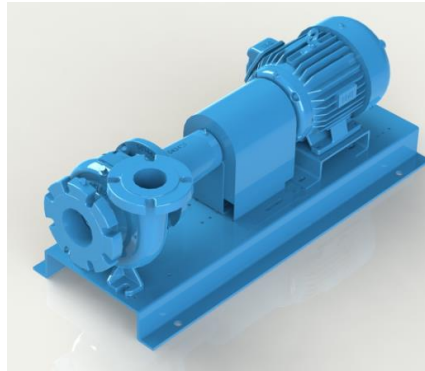
**Itemization of each case**

## Kit Program - Guidelines

- Stocking Distributor
  - Minimum Inventory - \$30K
  - Readjust inventory after 12 months
  - Have to use Weinman Parts to maintain NSF Certification
  - Must be Kit Certified – Pass a training schedule
  - Pump Serial Numbers have to be listed in database for warranty claims
  - Company name and address listed on our website and literature
  
- Non-Stocking Distributor
  - Order kit components as needed

## Universal Bases

The bases are pre-drilled to maximize the pump, motor size, and riser combinations on a single base.



Part No.	Dimensions	Part Description	List
135888-03	16"x40"	BASE,UNIVERSAL,16X40	\$330
135317-04	19"x46"	BASE,UNIVERSAL,19X46	\$380
135320-01	22"x33 "	BASE,UNIVERSAL,22X33	\$380
136214	22"x48"	BASE,UNIVERSAL,22X48	\$380
136215	24"x48"	BASE,UNIVERSAL,24X48	\$380

## Serial Numbers

- Assembling Channel partner must input serial numbers on connect for warranty purposes
- Anyone can see the input data
- Only assembling channel partner can modify the data

Imp Diameter, Head & Flow information from the NamePlate	
Serial Number :	T1665594
Part Number :	136057
Impeller Diameter :	0.000 Inches
GPM :	0 gallons
Head :	0 feet

**Serial Number Lookup**

Enter Serial Number :

\* Please enter at least 5 characters in the search field

Displaying  Items

Click here for help finding the serial number on your product.

**Tips for a Successful search:**

- Be sure to include leading 0's and leading letters.
- Try including or removing the "-" or spaces.
- Be sure to match your product date with the document dates (There may be multiple records with the same serial number from different time frames).

Serial Number	Date	Part Number	Bill of Materials	Model	Sales Order	Notes
T1665594	12/26/2013	136057	<a href="#">Click here for BOM</a>	KIT,CASE,2P	<a href="#">S108300Z</a>	

If the record was not found or if you need more info, please submit a Serial Request below.

**Request a Serial Record:**

\* Serial Number:

\* Model Number:

\* Brand:

Pump Size:

Name of Requestor:

\* Email:

Phone:

Enter details you are requesting for:

# NSF 372 v.61

## NSF Certification Certified through CSA

- NSF 61 – Indirect Additives
- NSF 372 – Low Lead Certification



# Weinman 375/575 End Suction NSF Certification

*Everyone. Everywhere. On Time Every Time.*

## NSF Drinking Water Guidelines

1. NSF/ANSI 60 Drinking water treatment chemicals.
  - Health effects, which addresses drinking water treatment chemicals (also known as direct additives) and
2. NSF/ANSI 61 Drinking water system components.
  - Health effects, which covers products and materials that contact drinking water (also known as indirect additives)
  - **NSF 61 not Available in Kits..**
3. NSF/ANSI 372 Drinking water system components
  - **Lead** Content is the third in a series of standards developed by the NSF Joint Committees on Drinking Water Additives.



# Weinman 375/575 End Suction NSF Certification

*Everyone. Everywhere. On Time Every Time.*

## What is NSF 372?

- Prior to being developed as NSF/ANSI 372, part of the content of this Standard was established as NSF/ANSI 61, Annex G.
- NSF/ANSI 61, Annex G Weighed average **lead content** evaluation procedure to a 0.25% lead requirement.
- Annex G was developed by the NSF Drinking Water Additives Task Group on **Lead** and approved by the NSF Joint Committee on Drinking Water Additives - System Components for addition to NSF/ANSI 61 in 2008.

# Weinman 375/575 End Suction NSF Certification

*Everyone. Everywhere. On Time Every Time.*

## NSF 61 vs NSF 372

Certified through CSA

Weinman 375/575 End Suctions

Weinman 1100/1200 Split Case Pumps

Pump Series:

Series 575 – Frame Mounted Pump Models: 1P; Weinman Split case Pumps – Horizontal mounted: 2L4A, 2L5, 2L6, 3L4, 3L5, 2.5R; 3R; 4R; 5R; 6R; 8R; 5S; 6S.  
4L4, 5L1, 5L2, 5L3, 6L1, 6L2, 6L3, 8L1, 8L2A, 8L2B, 8L3, 10L2A, 10L3B, 8L7, 8L8, 10L7, 10L8

Series 375 – Closed Coupled Pump Models: 1P; Weinman Split case Pumps – Vertical mounted: 2LVM4A, 2LVM5, 2LVM6, 2.5R; 3R; 4R; 5R; 6R; 8R; 5S; 6S.  
4LVM1A, 4LVM1B, 4LVM1C, 4LVM2, 4LVM3, 4LVM4, 5LVM1, 5LVM2, 8LVM1, 8LVM2A, 8LVM2B, 8LVM3, 10LVM2A, 10LVM3B, 10LVM3A, 6LVM7, 8LVM7, 8LVM8, 10LVM7, 10LVM8

Here is the link to our certifications page

[http://www.csagroup.org/us/en/services/testing-and-certification/certified-product-listing/certificate/016567\\_C\\_000%257C6853-01](http://www.csagroup.org/us/en/services/testing-and-certification/certified-product-listing/certificate/016567_C_000%257C6853-01)

# Price & Availability

## Price & Availability

- Liquid End Only – 2 Weeks
- Liquid End & Bearing Frame – 2 Weeks
- Liquid End Base Mounted – 2 Weeks
- Liquid End Base Coupling & Guard & Motor – 3 Weeks

Other options will cause lead-times to vary

## Price & Availability

- Mentor sizing and selection program
- Price Pages
- ePump - Configurator

[Home](#) | 
 [Log Out](#) | 
 [CP&S Connect](#)  
[Quotes And Orders](#) | 
 [Favorites](#) | 
 [Terms And Conditions](#) | 
 [Mentor Pump Selector](#)

**Model Configuration**

**Weinman Back Pull Out End Suction**

**Pump Setup**

Pump Setup: Frame Mounted

**Pump End**

Model: 3R

Impeller Trim: 12

Pump will ship with full trim unless you change it here

NSF 61 Certification Required?: No - Product will meet NSF 372 only

Case Wear Ring: None

Motor RPM: 1760 (60 Hz)

Non Overloading Motor Hp: 25

Bearing Frame: Medium

Bearings: Permanently Lubricated (100K Hrs L10)

Shaft Material: Steel

Shaft Sleeve Material: Brass

Mechanical Seal Material: Carbon / Silicon Carbide / EPDM (300 F Max)

Seal Flush: Standard Internal

Drip Pan: None

Certified Performance: None

Hydrostatic Testing: None

NPSH Testing: None

**Price**

Pump List Price	\$1,918.00
Mechanical Seal Material	\$219.00
<b>Total Configured List Price of Model</b>	<b>\$2,137.00</b>

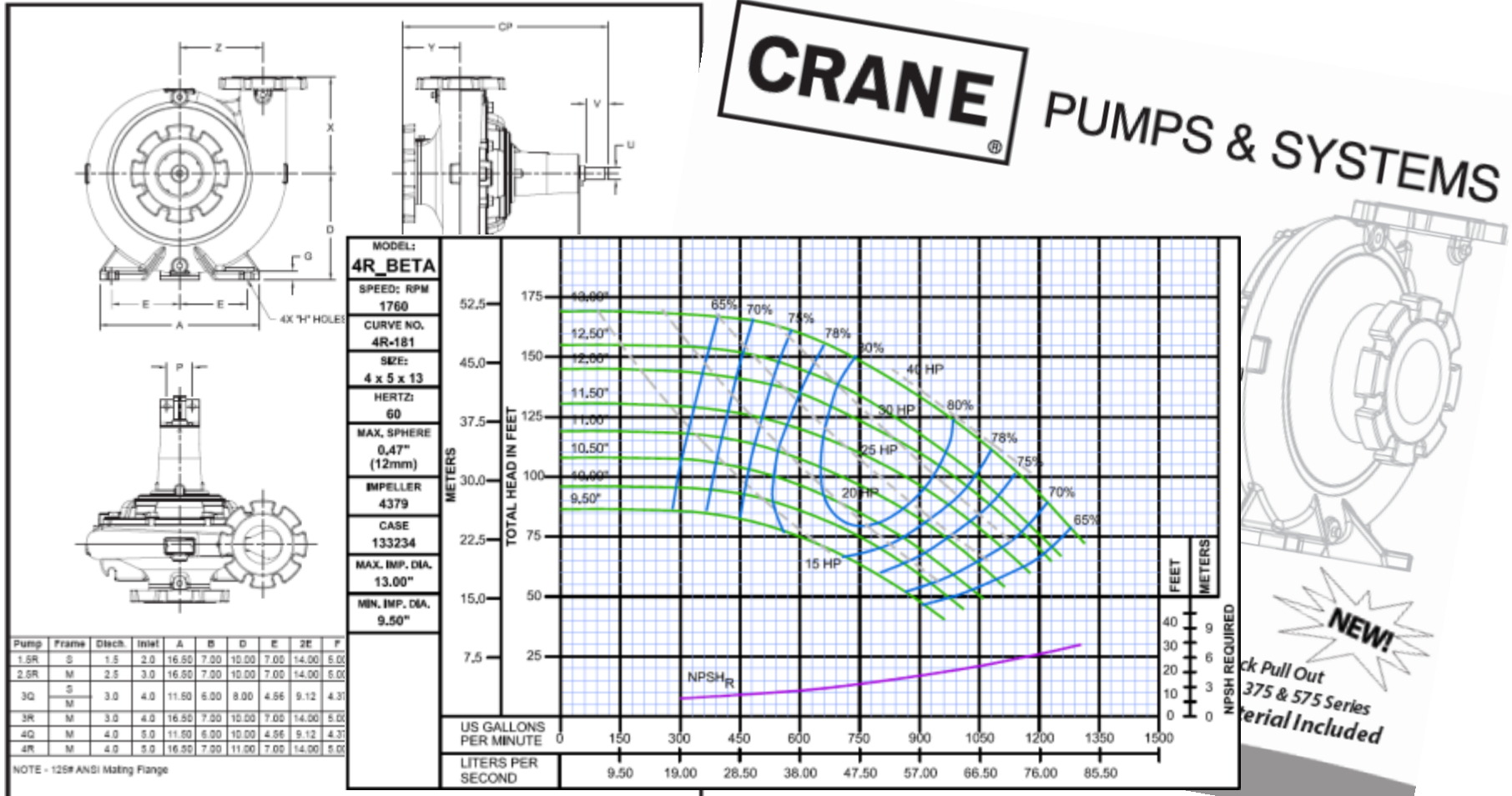
**Recommended Accessories** Select All

Select	Quantity	Part Number	Description	Price	Comment
<input type="checkbox"/>	1	132487	DIFFUSER,SUCTION,WSD4X4	\$402.00	Suction Diffuser for 3R Medium frame or equivalent
<input type="checkbox"/>	1	132502	VALVE,TRIPLE DUTY,W3D-3	\$453.00	TDV for 3R Medium frame or equivalent

# 375/575 Back Pull Out End Suction

Everyone. Everywhere. On Time Every Time.

## Curves and dimensions available on CP&S Connect



# Key Takeaways

## **Weinman 375/575 provides:**

- 22 Models
- 15 Models are B&G Replacements
- Meets Current DOE Regulations
- Kit Availability
- Quick Delivery
- Simplified Pricing
- Back pull out design
- NSF 372 Low Lead
- NSF 61
- Industry leading efficiencies



# Q&A



# Thank You!